

The 24th Seminar of Angioplasty of Chronic Total Occlusions

CTO Club

[Dates]

June 21 Fri. – 22 Sat., 2024

[Venue]

WINC AICHI, Nagoya, Japan

Final

Web URL • <https://cct.gr.jp/ctoclub/> Find us on 

Facebook • <https://www.facebook.com/profile.php?id=100064156205483>

Supported by Complex Cardiovascular Therapeutics



Directors

Course Directors

Maoto Habara
Toyohashi Heart Center

Yuji Hamazaki
Ootakanomori Hospital

Shunsuke Matsuno
The Cardiovascular Institute

Wataru Nagamatsu
Hokusetsu General Hospital

Kenya Nasu
Mie Heart Center

Yuji Oikawa
The Cardiovascular Institute

Atsunori Okamura
Sakurabashi Watanabe Advanced Healthcare Hospital

Hiroyuki Tanaka
Kurashiki Central Hospital

Takafumi Tsuji
Kusatsu Heart Center

Junji Yajima
The Cardiovascular Institute

Ryohei Yoshikawa
Sanda City Hospital

International Course Directors

Emmanouil Brilakis
Minneapolis Heart Institute [USA]

Jiyan Chen
Guangdong Provincial People's Hospital,
Institute of Cardiovascular Diseases
[People's Republic of China]

Scott Harding
Wellington Hospital [New Zealand]

Paul Hsien-Li Kao
National Taiwan University Medical School
& Hospital [Taiwan, R.O.C.]

Kambis Mashayekhi
Heartcenter Lahr [Germany]

Eugene Brian Wu
Prince of Wales Hospital [Hong Kong]

Honorary Co-directors

Yasushi Asakura
Aqua Rehabilitation Hospital

Yasumi Igarashi
Sapporo-Kosei General Hospital

Osamu Katoh

Eisho Kyo
Kusatsu Heart Center

Masahiko Ochiai
Showa University,
Northern Yokohama Hospital

Satoru Otsuji
Higashi Takarazuka Satoh Hospital

Takahiko Suzuki
Toyohashi Heart Center

Etsuo Tsuchikane
Toyohashi Heart Center

Kinzo Ueda
Takase Memorial Hospital

Masahisa Yamane
Saitama Sekishinkai Hospital

Greetings from the 24th CTO Club

Although it is said that PCI technology for CTO lesions has matured, not all problems have been solved yet. Even now, guidewires, microcatheters, and other devices targeting CTO lesions continue to be developed. Therefore, it is incumbent upon us in trying our best to become more proficient with these developing devices in order to further improve our success rates.

While we felt the benefits of online meetings at a time when it was difficult to hold live meetings due to COVID-19, we were reminded that we are able to have more active discussions by watching live case procedures together on the same screen in the same venue. Unless circumstances change, the next CTO Club will be held on-site on June 21-22, 2024.

We hope that CTO Club will become a source of useful information for CTO-PCI. We look forward to seeing you at the 24th CTO Club in Nagoya.

Yuji Oikawa, M.D.

The 24th CTO Club Representative Course Director

Program at a glance

Official Language: English

Simultaneous interpretation is not available.

J Session in Japanese

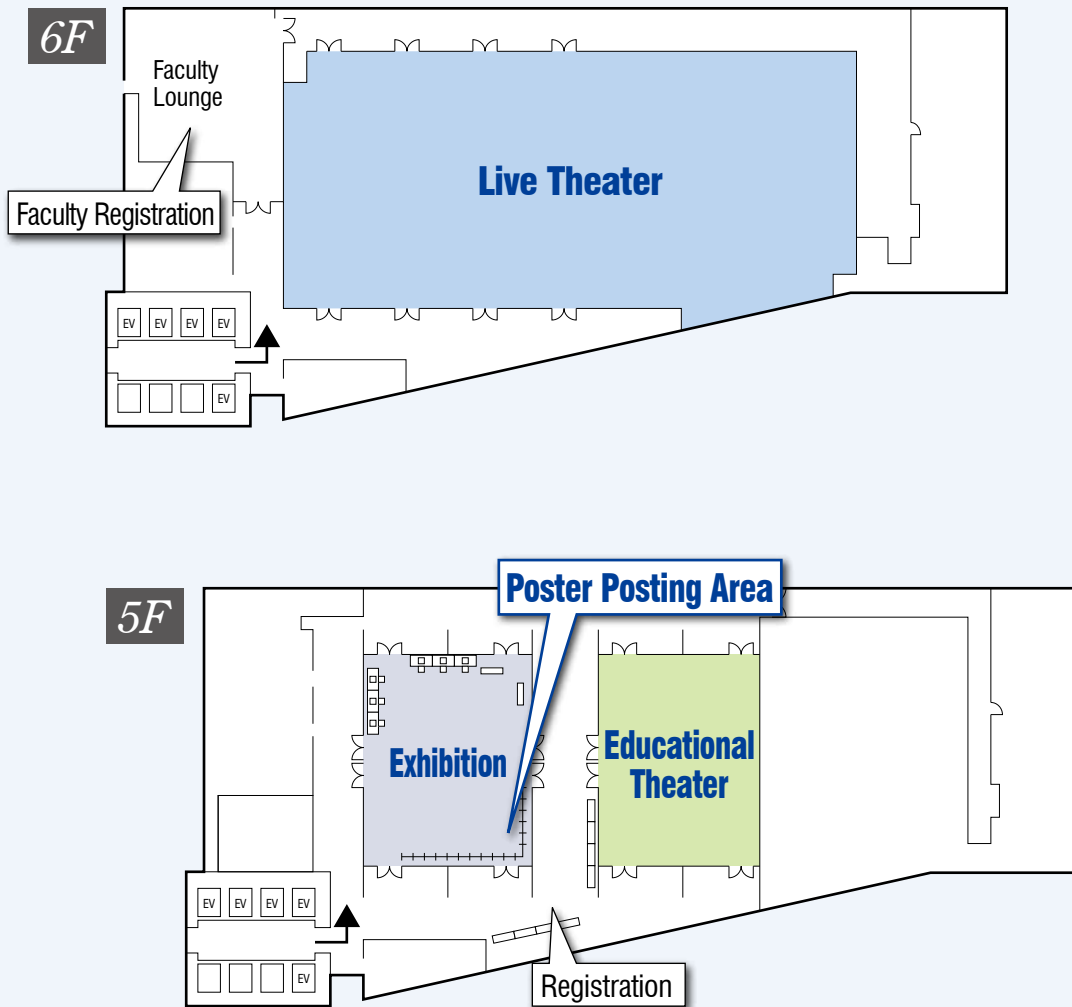
Friday, June 21

	7:50	8:00	9:00	10:00	11:00	12:00	13:00	14:00	15:00	16:00	17:00	18:00	19:00
Live Theater		Morning Session P.5	CTO Live Transmission The Cardiovascular Institute LIVE				Luncheon Seminar ASAHI INTECC CO., LTD. P.5	CTO Live Transmission The Cardiovascular Institute / Ootakanomori Hospital LIVE					
Educational Theater			International Joint Session: K-CTO@CTO Club P.7					International Joint Session: LIVE APCTO@CTO Club International Live Demonstration from Shanghai Zhongshan Hospital P.7					

Saturday, June 22

	7:50	8:00	9:00	10:00	11:00	12:00	13:00	14:00	15:00	16:00	17:00	18:00	19:00
Live Theater		Morning Session P.8	CTO Live Transmission Sakurabashi Watanabe Advanced Healthcare Hospital LIVE				Luncheon Seminar TERUMO Corporation P.8	CTO Live Transmission Sakurabashi Watanabe Advanced Healthcare Hospital LIVE					
Educational Theater			Case Competition P.9	International Joint Session: IJCTO@CTO Club P.9			Luncheon Seminar Abbott Medical Japan LLC P.9						

Floor Plan



General Information

Registration Fee

	By June 7	From June 8
Medical	JPY 20,000	JPY 25,000
Co-medical	JPY 2,000	JPY 3,000
Industry	JPY 20,000	JPY 25,000
Student/Intern	Free	

*Student/Intern ID is required.

Online Registration ➔ <https://cct.gr.jp/ctoclub/>

Opening Hours

[Registration]

Registration Desk, 5F

Friday	June 21	7:40-17:00
Saturday	June 22	7:40-15:00

[Exhibition]

Exhibition Room, 5F

Friday	June 21	9:00-18:00
Saturday	June 22	9:00-15:00

[Poster Posting]

Exhibition Room, 5F

Friday	June 21	12:00-18:00
Saturday	June 22	9:00-15:00

Food and Beverages

Breakfast is provided in Mornig Session.

Every Luncheon Seminar provides Lunch boxes for attendees.

Coffee service will be offered at the Exhibition.

Language

Official Language: English

Simultaneous interpretation is not available.

View Live Case Data on “Live Case Viewer”

Live case data & strategies

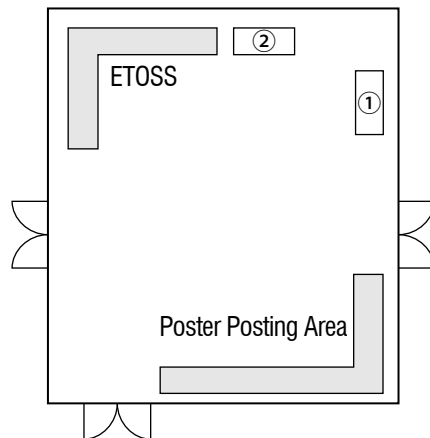
The 24th CTO Club participants can view case data and strategies of operators by visiting the “Live Case Viewer” website. Please access the page and read case information before live sessions in order to deeply understand case treatments on the day.

*Please note that “Live Case Viewer” is a members only website and require a free registration.

<https://case.uproses.co.jp/>



Exhibition



June 21 9:00-18:00

June 22 9:00-15:00

Exhibition Room, 5F

Exhibition Booth

①OrbusNeich Medical K.K.

②ASAHI INTECC CO., LTD.

Hands-on booth with ASAHI ETOSS and ESPELUX Edu

June 21 9:00-18:00

June 22 9:00-15:00

Exhibition Room, 5F

Please visit and learn guide wire manipulation techniques based on the “PP Method” with ETOSS.

Besides ETOSS, we will introduce the ESPELUX Edu, ASAHI INTECC’s first software product for educational use, at the booth this year. You will also have the opportunity to try the demonstration of ESPELUX Edu. Limited quantities are also available for purchase on-site.

There will be a luncheon seminar on June 21st with the theme of ESPELUX Edu co-sponsored by ASAHI INTECC so please check out the detail.

Supported by: *ASAHI INTECC CO., LTD.*

Live Theater

7:50-8:25 Morning Session: Live Case Pre-discussion Session

We are going to discuss live case treatments of the day in the morning.
Let's start your day by learning strategies and exchanging opinions about live cases of the day.

Chairs: Kazuhiro Ashida, Yoichi Nozaki *Commentators:* Takenori Domei, Koshi Matsuo, Yuya Nakagawa

CTO Live Case Transmission

In the 24th CTO Club, our operators will demonstrate some exciting approaches by outlining every aspect of strategy and procedural detail from beginning to end.
Please attend to learn tips and tricks from the experts!

The Cardiovascular Institute

Operators: Shunsuke Matsuno, Kenya Nasu, Yuji Oikawa
Imaging Commentators: Michiya Kageyama, Norihiro Kobayashi

8:30-10:25 Live Case Transmission 1

Chairs: Maoto Habara
Paul Hsien-Li Kao
Atsunori Okamura

Supervisor: Takahiko Suzuki
Commentators: Takenori Domei, Shinya Fujita, Masato Ishikawa,
Hiromasa Katoh, Koshi Matsuo,
Seung-Woon Rha, Priyen Kantilal Shah,
Masaki Tanabe

Focus Live
Co-sponsored by: Abbott Medical Japan LLC

Petit Focus Live
Co-sponsored by: CANON MEDICAL SYSTEMS CORPORATION

10:30-11:50 Live Case Transmission 2

Chairs: Scott Harding
Yoshiaki Ito
Wataru Nagamatsu

Supervisor: Satoru Otsuji
Commentators: Yusuke Hosokawa, Byeong-Keuk Kim,
Tomoko Kobayashi, Takanobu Mitarai,
Hisayuki Okada, Masaaki Okutsu,
Natarajapillai Pratap Kumar, Jon Suh

Focus Live & Mini Lecture
The role of DLC ~Crusade Type R~
Koshi Matsuo
Co-sponsored by: Kaneka Medix Corporation

Petit Focus Live
Co-sponsored by: CANON MEDICAL SYSTEMS CORPORATION

12:00-13:00 Luncheon Seminar: The Future of CTO-PCI

Chairs: Yoshifumi Kashima
Masahisa Yamane

Discussers: Maoto Habara, Katsuyuki Hasegawa, Paul Hsien-Li Kao, Kambis Mashayekhi
Concept of PP Method and ESPELUX Edu
Katsuyuki Hasegawa
How to Use ESPELUX Edu and its Current Situation
Maoto Habara

Co-sponsored by: ASAHI INTECC CO., LTD.

Live Theater

CTO Live Case Transmission

In the 24th CTO Club, our operators will demonstrate some exciting approaches by outlining every aspect of strategy and procedural detail from beginning to end. Please attend to learn tips and tricks from the experts!

The Cardiovascular Institute

Operators: Shunsuke Matsuno, Kenya Nasu, Yuji Oikawa
Imaging Commentators: Michiya Kageyama, Norihiro Kobayashi

13:10-14:40 Live Case Transmission 3 -The Future of CTO-PCI-

Chairs: Yoshifumi Kashima
Kambis Mashayekhi
Takafumi Tsuji

Supervisor: Yasumi Igarashi
Commentators: Mohamed Ayoub, Rei Fukuhara,
Maoto Habara, Katsuyuki Hasegawa,
Hiromasa Katoh, Tairo Kurita, Shi-Chi Liu,
V. Surya Prakasa Rao, Kaname Takizawa

Focus Live

Co-sponsored by: ASAHI INTECC CO., LTD /
CANON MEDICAL SYSTEMS CORPORATION

CTO Live Case Transmission

In the 24th CTO Club, our operators will demonstrate some exciting approaches by outlining every aspect of strategy and procedural detail from beginning to end. Please attend to learn tips and tricks from the experts!

Ootakanomori Hospital

Operators: Yuji Hamazaki, Junji Yajima
Imaging Commentators: Mitsunori Mutou, Kenichiro Shimoji

14:45-16:15 Live Case Transmission 4

Chairs: P K Goel
Yoichi Nozaki
Ryohei Yoshikawa

Supervisor: Masahisa Yamane
Commentators: Shingo Hosogi, PLN Kapardhi, Kenji Kawajiri,
Yuichi Kobori, Jong-Young Lee,
Patrick Lim, Yuya Nakagawa, Takeshi Serikawa

Petit Focus Live

Co-sponsored by: Shimadzu Corporation

16:20-18:00 Live Case Transmission 5

Chairs: Kazuhiro Ashida
Jiyan Chen
Ichiro Hamanaka

Supervisor: Eisho Kyo
Commentators: Takenori Domei, Shunsuke Kitani, Feng Yu Kuo,
Masakazu Nagaoka, Takeshi Niizeki,
Tara N Patel, Hoyoun Won

Petit Focus Live

Co-sponsored by: Shimadzu Corporation

Educational Theater

8:50-10:20

**International Joint Session:
K-CTO@CTO Club**

K-CTO and CTO Club have achieved academic development along with friendship through mutual exchange for a considerable period of time. Such mutual exchange is believed to be necessary for the development and future of the two organizations, and the 24th CTO Club also prepared a wonderful chance for K-CTO and CTO Club joint session. Representative CTO specialists from both countries will give presentations on interesting topics. We would like all audiences to attend and enjoy this session together.

Supervisor: Satoru Otsuji

Chairs: Byeong-Keuk Kim, Takafumi Tsuji

Panelists: Masaki Fujita, Rei Fukuhara, Yuya Nakagawa, Jon Suh

Techniques and Considerations for CTO with Complex Anatomy

LAD ostial CTO Intervention

Jung-Kyu Han

Post-CABG CTO Intervention

Yuichi Kobori

Image-guided CTO Intervention

IVUS-guided Penetration Plane Method

Katsuyuki Hasegawa

Utilization of On-site CT for CTO Intervention

Hoyoun Won

Updated Techniques and Strategies

How to Manage CTO with Multivessel Disease

Jong-Young Lee

How to Utilize Calcium Modification Techniques for CTO Intervention: IVL, rotablation, and PlasmaWire

Shozo Ishihara

13:10-16:00

**International Joint Session:
APCTO@CTO Club International Live Demonstration from Shanghai Zhongshan Hospital**

LIVE

AP CTO Club would like to take this opportunity to thank everyone having supported us up to the present day. Recently the globalization and standardization of CTO-PCI procedure has been seen throughout the world. It is truly a fantastic movement, and at the same time, the ultimate objective which "Global CTO Club" is aiming for. And we gave concepts at our past AP CTO session "CTO PCI safe" and "The balance of safe, success, and time management" which will be important issue for globalization and standardization of CTO PCI. Now our mission is to accelerate such movement and for that purpose, we are going to have the session featuring international live case transmission from Shanghai to share international expert's procedures with many audiences again this year. We would like to welcome all our participants for this special live demonstration.

[Live Sites]

Shanghai Zhongshan Hospital, People's Republic of China

Operator: Lei Ge, Jie Qian

Chairs: Paul Hsien-Li Kao, Wataru Nagamatsu, Eugene Brian Wu

*Commentators: Yu-Ho Chan, Jiyan Chen, Scott Harding, Arun Kalyanasundaram,
Feng Yu Kuo, Sidney Tsz Ho Lo, Hiroaki Matsuda,
Muenpetch Muenkaew, Takeshi Niizeki*

Co-sponsored by: ASAHI INTECC CO., LTD / OrbusNeich Medical K.K.

Live Theater

7:50-8:25 Morning Session: Live Case Pre-discussion Session

We are going to discuss live case treatments of the day in the morning.
Let's start your day by learning strategies and exchanging opinions about live cases of the day.

Chairs: Fumitaka Hosaka, Shunsuke Matsuno Commentators: Rei Fukuhara, Yusuke Hosokawa, Takanobu Mitarai

CTO Live Case Transmission

In the 24th CTO Club, our operators will demonstrate some exciting approaches by outlining every aspect of strategy and procedural detail from beginning to end.
Please attend to learn tips and tricks from the experts!

Sakurabashi Watanabe Advanced Healthcare Hospital

Operators: Maoto Habara, Wataru Nagamatsu, Atsunori Okamura, Ryohei Yoshikawa
Imaging Commentators: Masato Ishikawa, Koshi Matsuo, Tetsuya Yamamoto

8:30-10:25 Live Case Transmission 6

Chairs: Tomohiro Kawasaki
Shunsuke Matsuno
Eugene Brian Wu

Supervisor: Yasushi Asakura
Commentators: Brian K. Jefferson, Muenpetch Muenkaew,
Shinya Okazaki, Takeshi Serikawa,
Takuma Tsuda

Mini Lecture

Final device selection for complex lesion

Norihiko Kobayashi

Co-sponsored by: Boston Scientific Japan K.K.

10:30-11:50 Live Case Transmission 7

Chairs: Yuji Hamazaki
Tomoko Kobayashi
Sidney Tsz Ho Lo

Supervisor: Masahiko Ochiai
Commentators: Chee Yang Chin, Hiroaki Hirase,
Masaharu Okada, Satoru Sumitsuji,
Takahide Suzuki, Cheng Chun Wei

Focus Live

Co-sponsored by: AIR WATER LINK INC. / Philips Japan, Ltd.

12:00-13:00 Luncheon Seminar: Tip Detection Method in CTO PCI Session in Japanese

Chairs: Takeshi Serikawa
Junji Yajima

The History of Tip-Detection Method
Satoshi Suzuki (Kindai University Nara Hospital)
Various styles of TD cases
Hiromasa Katoh
Non-CTO case where TD-ADR was key to success
Shunsuke Matsuno

Co-sponsored by: TERUMO Corporation

13:10-14:40 Live Case Transmission 8

Chairs: Kenya Nasu
Yuji Oikawa

Commentators: Fumitaka Hosaka, Shozo Ishihara,
Wirash Kehasukcharoen, Nae Hee Lee,
Prashant Pawar, Makoto Sekiguchi,
Yoshinori Shimooka

Focus Live & Mini Lecture

The usefulness of Bio Freedom Ultra based on Computer Aided Engineering

Hirooki Higami (Gifu Heart Center, Japan)

Co-sponsored by: Kaneka Medix Corporation

14:50-16:30 Live Case Transmission 9

Chairs: Arun Kalyanasundaram
Hiroyuki Tanaka
Junji Yajima

Commentators: Masaki Fujita, Seiji Kano, Anek Kanoksilp,
Hiroaki Matsuda, Khalid Tammam,
Tomohiro Yamaguchi, Masataka Yoshinaga

Mini Lecture

GP-Lock : Standardization of Maximum Backup Force in PCI

Kota Tanaka (Sakurabashi Watanabe Advanced Healthcare Hospital, Japan)

Co-sponsored by: NIPRO CORPORATION

Educational Theater

8:30-9:40

Case Competition: My most challenging CTO PCI case

Among submitted cases, four exemplary cases will be selected as "oral presentation" at the Case Competition and other cases with honorable mention will be selected as "online publication" during the 24th CTO Club. The best case of the Case Competition will receive an award and the presenter will be invited as a CTO Club faculty member in 2024.

Chairs: Satoru Sumitsuji, Junji Yajima

*Judges: Masaki Fujita, Paritosh Rajput, Seung-Woon Rha,
Takahide Suzuki, Cheng Chun Wei*

Post-bypass RCA Bifurcation CTO PCI

Ying-Chang Tung

Double CTO, impaired left ventricle and a large perforation - An innovative way to address perforations!

Arun Kalyanasundaram

Complex Retrograde CTO-PCI via a saphenous vein graft

Takushi Sugiyama

PCI with tip detection method for LCX CTO of unknown vascular running

Satoshi Suzuki

9:50-11:50

International Joint Session: IJCTO@CTO Club

The IJCTO extends its deepest gratitude to all who have supported us thus far. The recent movement toward the globalization and standardization of the CTO-PCI procedure is a remarkable development, perfectly aligning with the ultimate goal of the "Global CTO Club." In our previous IJCTO session, we introduced the concepts of "CTO PCI" and "Optimizing safety, success, and time management," which are crucial for the global standardization of CTO PCI. Our mission now is to accelerate this progress. Therefore, we are hosting a session to share the expertise of Japanese and Indian specialists with a wide audience once again this year. We warmly invite all participants to join us for this exceptional academic session.

Chairs: Kenya Nasu, V. Surya Prakasa Rao

*Commentators: Sharad Chandra, Roopali Reddy Dandu, Rahul Gupta,
Ajay K, Arun Kalyanasundaram, Yoshifumi Kashima,
Sudheer Koganti, Rama Rao Lagaputi, Priyen Kantilal Shah,
Gautam Swaroop*

How I have done, how you would have done

Balloon uncrossable RCA CTO PCI

PLN Kapardhi

Zero contrast Retrograde CTO PCI

Natarajapillai Pratap Kumar

A case of Retrograde CTO PCI

P K Goel

Retrograde RCA CTO PCI through LAD CTO in post CABGs patient

A. Sharath Reddy

Multiple CTOs in RCA - Robust Antegrade with GAIA tip double curve

V. Surya Prakasa Rao

Interesting CTO case-ADR

Arun Kalyanasundaram

Interesting CTO case

Tairo Kurita

Successful Revascularization of Coronary Occlusion due to Membranous Plaques by IVUS-based

Real-time 3D Wiring Using the Tip Detection Method in a Patient with Cardiac Arrest

Tomohiro Yamaguchi

LAD CTO with a severely calcified entry

Kenichiro Shimoji

12:00-13:00



Luncheon Seminar:

Session in Japanese

Characteristics of DES Required for Complex PCI; Based on Data and Experience

Chair: Yuji Oikawa

The Verification of Stent Polymer Durability in Complex PCI

Yohei Numasawa (Keio University School of Medicine, Japan)

Potential of XIENCE™ Stent in CTO Lesion

Yoshiaki Ito

Co-sponsored by: Abbott Medical Japan LLC

Poster Presentation

Date & Time: Friday, June 21 - Saturday, June 22 (JST)

Venue: Poster Posting Area, Exhibition Hall

P-01 No way to go but .. forward!

Aaron SL Wong (National Heart Centre Singapore, Singapore)

P-03 A case of RCA CTO treated using a direct channel from the LAD apex

Shigeki Nishiyama (Saitama Sekishinkai Hospital, Japan)

P-04 Pre-procedure Virtual Reality Guide Catheter Simulation led to successful PCI in a case of CTO of an anomalous origin RCA with nearly identical orifice originating near the left coronary artery origin

Masataka Yoshinaga (Fujita Health University Hospital, Japan)

P-05 A case of successful treatment by cutting with DCA into the false lumen in the plaque and completing the treatment with DCB for chronic complete occlusion lesion in the left anterior descending branch

Ayaka Kimura (Shuuwa General Hospital, Japan)

P-06 A case in which GP-Lock was effective in treating a chronic occlusive lesion of the right coronary artery with abnormal origin

Yasuaki Koga (Oita Prefectural Hospital, Japan)

P-07 Everything everywhere all at once: CTO PCI, LM PCI, IVUS and RotaCut

Narathip Chunhamaneewat (Siriraj Hospital, Mahidol University, Thailand)

P-08 A case of LCx CTO treated with TD-ADR

Ryusuke Yamamoto (Takaoka Minami Heart Center, Japan)

P-09 A case of a CTO with severe calcification successfully passed through a guidewire Astato 9-40

Shoji Kawakami (Aso Iizuka Hospital, Japan)

P-10 Calcified LAD cto anterograde pci using rota-ablation at LM trifurcation

Dhananjay Kumar (Bhagwan Mahair Medica Superspeciality Hospital, India)

P-11 Minimalistic approach combined with tip-detection antegrade dissection and reentry in chronic total occlusion intervention

Yutaka Tadano (Sapporo Cardio Vascular Clinic, Japan)

P-12 Successful Percutaneous Coronary Intervention for Chronic Total Occlusion in Left Anterior Descending Artery with Intravascular Ultrasound Guidance and Directional Coronary Atherectomy

Takayuki Ishihara (Kansai Rosai Hospital, Japan)

P-13 A case of LCx CTO with severe calcified lesion

Kiwamu Sudo (Sakurabashi Watanabe Advanced Healthcare Hospital, Japan)

P-15 A RCA CTO re-try case failed due to rare event

Isamu Fukuizumi (Nippon Medical School Musashikosugi Hospital, Japan)

P-16 Successful Recanalization for Chronic Total Occlusion in Left Circumflex Artery with a Large Bifurcation Angle by Using Steerable Microcatheter

Shinichiro Masuda (Ageo Central General Hospital, Japan)

International Faculty Members

Mohamed Ayoub

University Heart Center Bad Oeynhausen
[Germany]

Yu-Ho Chan

The CUHK Medical Centre [Hong Kong]

Sharad Chandra

KGMU [India]

Chee Yang Chin

National Heart Centre Singapore [Singapore]

Roopali Reddy Dandu

SGPGI [India]

Lei Ge

Zhongshan Hospital, Fudan University
[People's Republic of China]

P. K. Goel

Medanta Heart Institute [India]

Ajay K Gopal

Almas Hospital, Kotakal [India]

Rahul Gupta

Apollo Hospital [India]

Jung-Kyu Han

Seoul National University Hospital [Korea]

Brian K. Jefferson

Centennial Hospital [USA]

PLN Kabardy

Care Hospitals, Hyderabad [India]

Arun Kalyanasundaram

Promed Hospital [India]

Anek Kanoksilp

Central Chest Institute Thailand [Thailand]

Wirash Kehasukcharoen

Central Chest Institute of Thailand [Thailand]

Byeong-Keuk Kim

Yonsei University Severance Cardiovascular
Hospital [Korea]

Sudheer Koganti

Citizen's Specialty Hospital [India]

Feng Yu Kuo

Kaohsiung Veterans General Hospital
[Taiwan, R.O.C.]

Rama Rao Lagaputi

Aster Ramesh Hospital [India]

Jong-Young Lee

Kangbuk Samsung Hospital, Sungkyunkwan
University School of Medicine [Korea]

Nae Hee Lee

SoonChunHyang University Hospital
Bucheon [Korea]

Patrick Lim

Khoo Teck Puat Hospital [Singapore]

Shih-Chi Liu

Fu Jen Catholic University Hospital
[Taiwan, R.O.C.]

Sidney Tsz Ho Lo

Liverpool Hospital [Australia]

Muenpetch Muenkaew

Thammasat University Hospital,
Pathumthani [Thailand]

Taral N Patel

HonorHealth Scottsdale Shea Medical Center
[USA]

Prashant Pawar

Fortis Hospital [India]

Natarajapillai Pratap Kumar

Meditrina Hospital [India]

Jie Qian

Fu Wai Hospital [People's Republic of China]

Paritosh Rajput

KDA Hospital [India]

V. Surya Prakasa Rao

Care Hospitals, Banjara hills, Hyderabad
[India]

A. Sharath Reddy

Medicover Hospitals [India]

Seung-Woon Rha

Cardiovascular Center,
Korea University Guro Hospital [Korea]

Priyen Kantilal Shah

Care Hospitals, Hyderabad [India]

Jon Suh

SoonChunHyang University Bucheon Hospital
[Korea]

Gautam Swaroop

Sahara Hospital [India]

Khalid Tammam

International Medical Center, Jeddah
[Saudi Arabia]

Cheng Chun Wei

Shin Kong Memorial Hospital
[Taiwan, R.O.C.]

Hoyoun Won

Chung-Ang University Hospital [Korea]

Aaron SL Wong

National Heart Centre Singapore [Singapore]

Japanese Faculty Members

Kazuhiro Ashida
Seirei Yokohama Hospital

Takenori Domei
Kokura Memorial Hospital

Masaki Fujita
Edogawa Hospital

Shinya Fujita
Hamamatsu Medical Center

Rei Fukuhara
Hyogo Prefectural Amagasaki General Medical Center

Ichiro Hamanaka
Rakuwakai Marutamachi Hospital

Katsuyuki Hasegawa
Higashi Takarazuka Satoh Hospital

Hiroaki Hirase
Takaoka Minami Heart Center

Fumitaka Hosaka
Okamura Memorial Hospital

Shingo Hosogi
Hosogi Hospital

Yusuke Hosokawa
Nippon Medical School Musashi Kosugi Hospital

Shozo Ishihara
Mimihara General Hospital

Masato Ishikawa
Fujita Health University School of Medicine

Yoshiaki Ito
Saiseikai Yokohama-City Eastern Hospital

Michiya Kageyama
Nasu Red Cross Hospital

Seiji Kano
Mie Heart Center

Yoshifumi Kashima
Sapporo Cardio Vascular Clinic

Hiromasa Katoh
Fukui Prefectural Hospital

Kenji Kawajiri
Matsubara Tokushukai Hospital

Tomohiro Kawasaki
Shin-Koga Hospital

Shunsuke Kitani
Sapporo-Kosei General Hospital

Norihiro Kobayashi
Saiseikai Yokohama-City Eastern Hospital

Tomoko Kobayashi
Kyoto Katsura Hospital

Yuichi Kobori
Toda Chuo General Hospital

Tairo Kurita
Mie University Hospital

Hiroaki Matsuda
Nagoya Heart Center

Koshi Matsuo
Yao Tokushukai General Hospital

Takanobu Mitarai
OOITA OKA Hospital

Mitsunori Mutou
Kikuna Memorial Hospital

Masakazu Nagaoka
Ebina General Hospital

Yuya Nakagawa
Hakodate Medical Association Hospital

Takeshi Niizeki
Okitama Public General Hospital

Yoichi Nozaki
Hokko Memorial Hospital

Hisayuki Okada
Seirei Hamamatsu General Hospital

Masaharu Okada
Omi Medical Center

Shinya Okazaki
Juntendo University School of Medicine

Masaaki Okutsu
New Tokyo Hospital

Makoto Sekiguchi
Fukaya Red Cross Hospital

Takeshi Serikawa
Fukuoka Wajiro Hospital

Kenichiro Shimoji
Saiseikai Utsunomiya Hospital

Yoshinori Shimooka
Hokushinkai Megumino Hospital

Satoru Sumitsuji

Takahide Suzuki
JA Hokkaido Asahikawa Kosei General Hospital

Kaname Takizawa
JCHO Sendai Hospital

Masaki Tanabe
Nozaki Tokushukai Hospital

Takuma Tsuda
Nagoya Ekisaikai Hospital

Tomohiro Yamaguchi
Osaka Metropolitan University Graduate School of Medicine

Masataka Yoshinaga
Fujita Health University

(Alphabetical order as of June 13, 2024)

Cooperative Company



▶ Diamond Supporter

ASAHI INTECC CO., LTD.



▶ Gold Supporters

Abbott Medical Japan LLC

Kaneka Medix Corporation

TERUMO Corporation



▶ Silver Supporters

CANON MEDICAL SYSTEMS CORPORATION

AIR WATER LINK INC.

Philips Japan, Ltd.

NIPRO CORPORATION

Shimadzu Corporation



▶ Bronze Supporters

Boston Scientific Japan K.K.

Light Tec Co., Ltd.

Medtronic Japan Co., Ltd.

Nippon Boehringer Ingelheim Co., Ltd

OrbusNeich Medical K.K.

Softtech Co., Ltd.

TOA EIYO LTD.

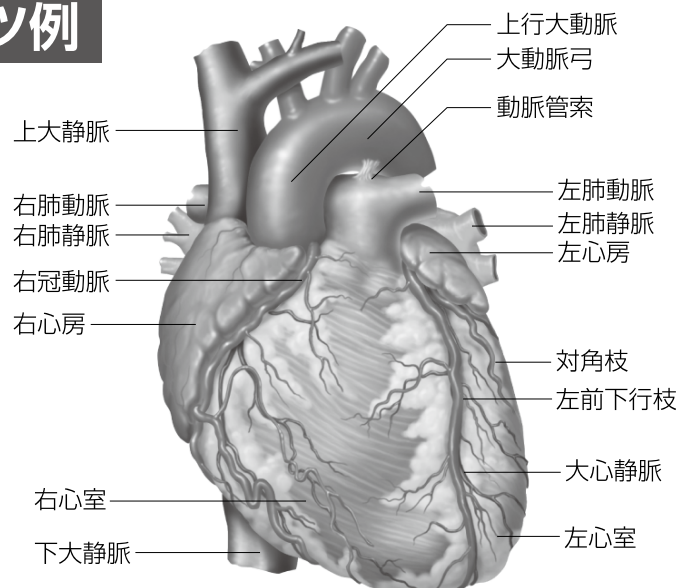
WIN INTERNATIONAL CO., LTD.

(As of June 13, 2024)

トーアエイヨー株式会社『医療関係者向け情報』会員限定コンテンツ 「インフォームドコンセントのための心臓・血管病アトラス」のご紹介

コンテンツ例

心臓の図
(正面)



■「インフォームドコンセントのための心臓・血管病アトラス」は、循環器疾患患者さんへのインフォームドコンセントにご利用いただくための病態・検査・治療に関するイラスト・画像集です。

■パソコンやタブレット型情報端末での患者さん説明をはじめ、イラストや画像をダウンロードいただけます。

■ご利用には、会員登録が必要となります。

コンテンツへのアクセスは

URL <https://med.toaeiyo.co.jp/contents/atlas/index.html>

トーアエイヨー アトラス

検索

