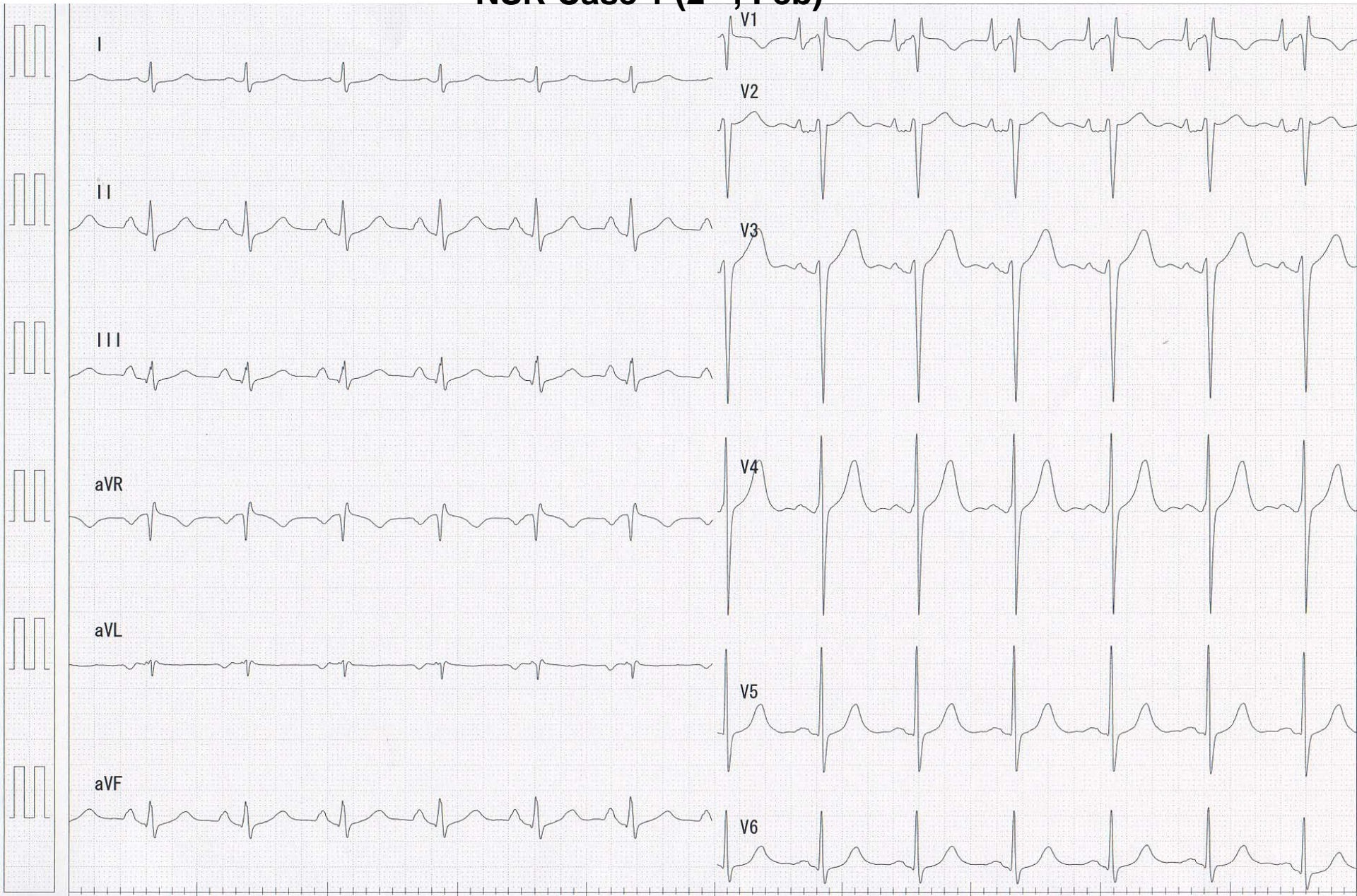


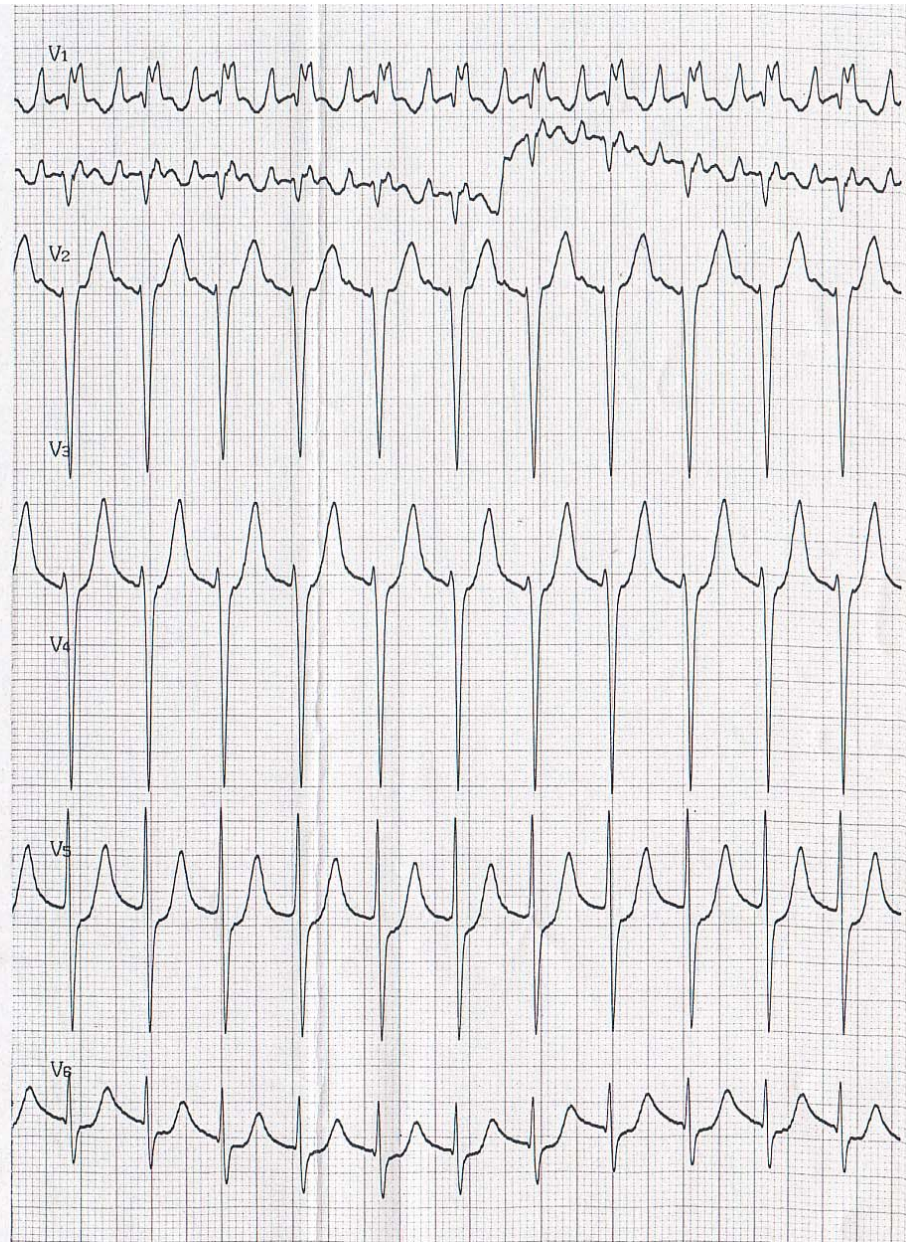
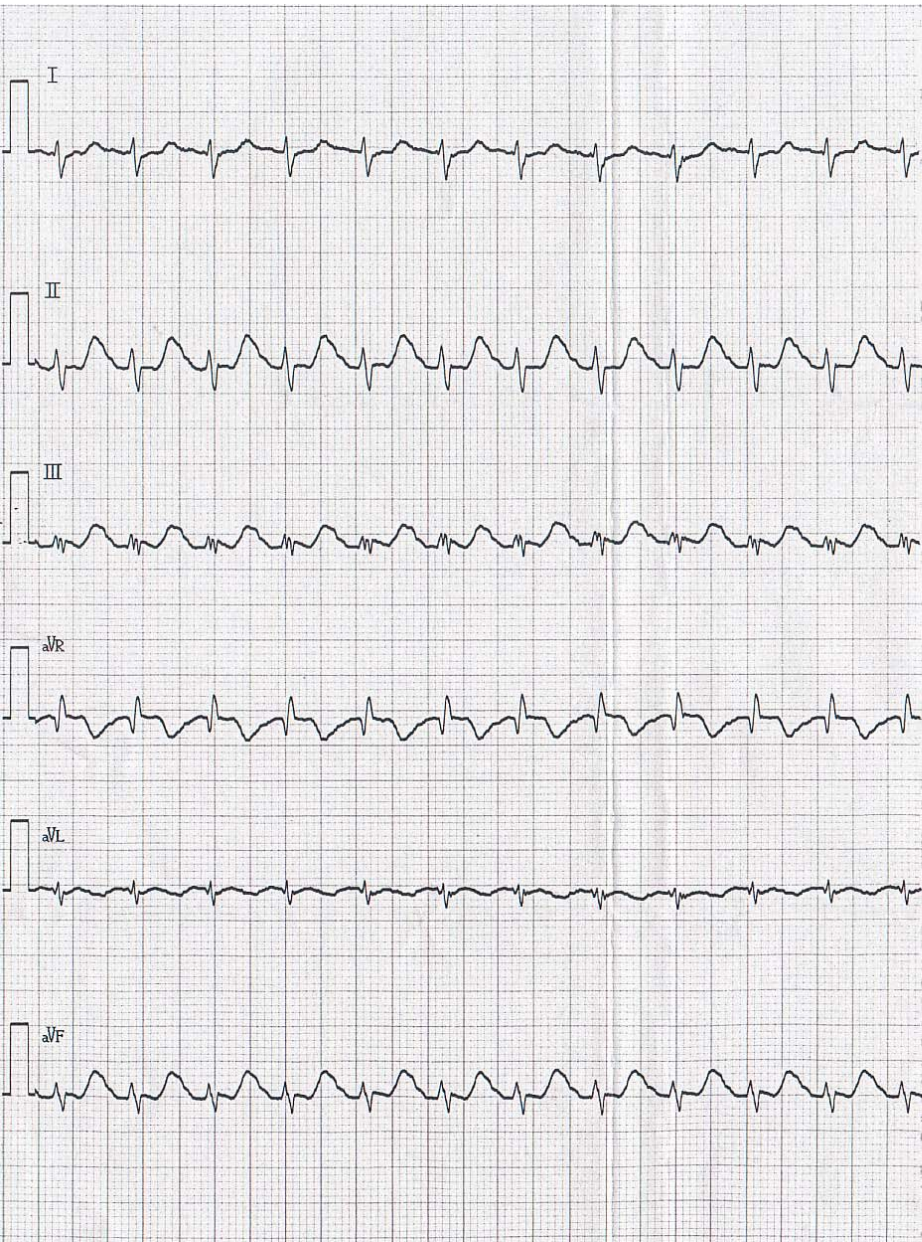
# Case 1 (2<sup>nd</sup>, Feb)

- 57 yrs-old, male
- He was introduced from a clinic to get the radiofrequency catheter ablation for his multiple drug refractory atrial fibrillation (AFB).
- He underwent catheter ablation on 30<sup>th</sup> in November 2007.
- All four pulmonary vein were electrically isolated, and linear block line was also created at the roof of the left atrium which was ascertained by the noncontact mapping system (EnSite).
- On 8 and 11<sup>th</sup> in November 2007, he suffered from sudden palpitation, and ECG revealed the occurrence of the atrial tachycardia of two different morphology of the P wave.

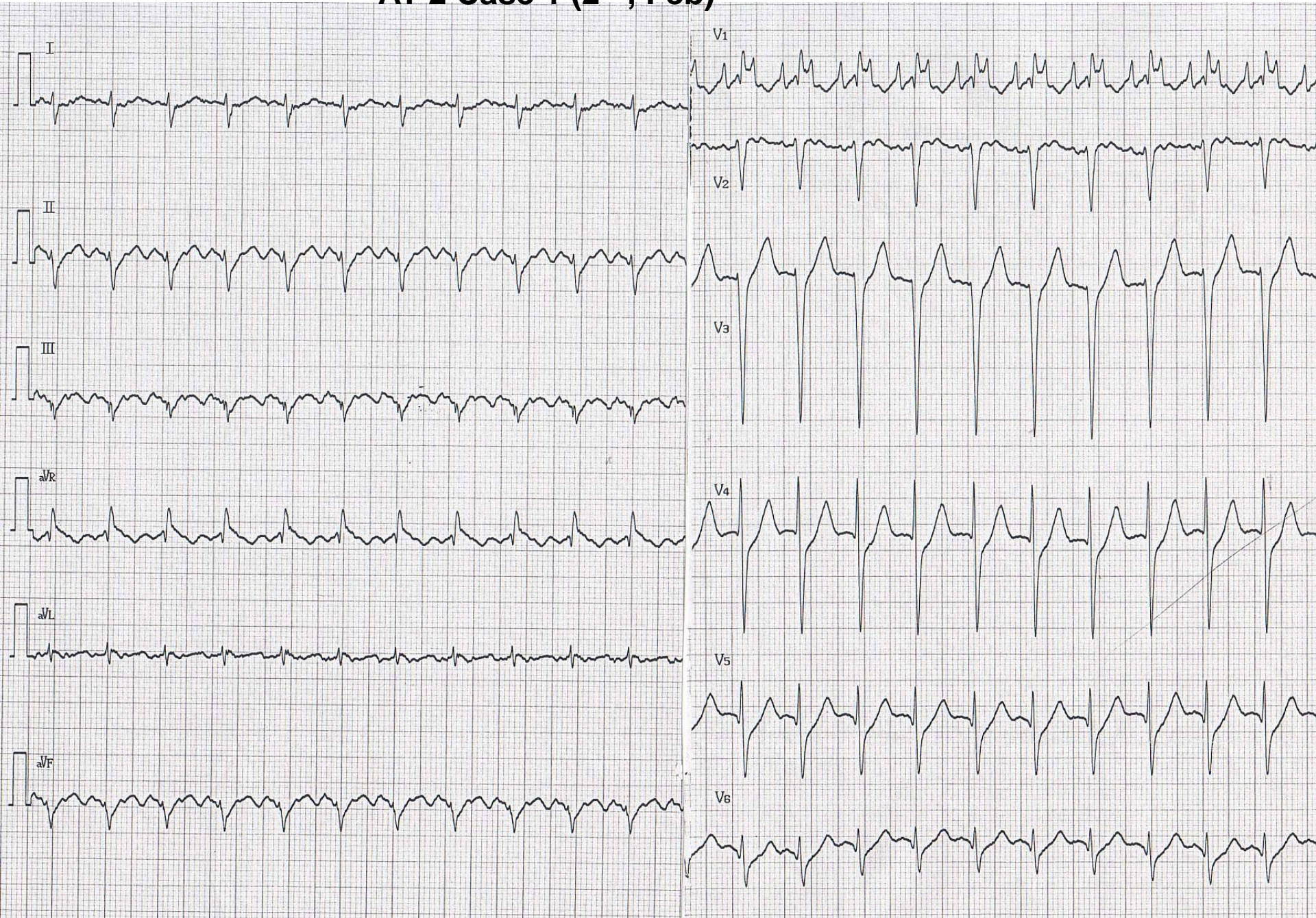
# NSR Case 1 (2<sup>nd</sup>, Feb)



# AT 1 Case 1 (2<sup>nd</sup>, Feb)



# AT 2 Case 1 (2<sup>nd</sup>, Feb)



## 2DE Case 1 (2<sup>nd</sup>, Feb)

### M-mode (B-mode)

AoD	34 mm (20~38)	LAD	35 mm (20~40)		
IVSd	13 mm (6~12)	LVDd	37 mm (30~54)	LVPWd	14 mm (6~12)
IVSs	16 mm	LVDs	23 mm (22~38)	LVPWs	17 mm
FS	38 % (30~50)	EF(Teichholz)	69 % (58~80)	EF(Simpson)	% (58~80)
LV inflow			IVC		
E	0.18 m/s	吸気		6 mm	
A	0.1 m/s	呼気		11 mm	
E/A	1.07				
E DcT	241 ms				

1) 大動脈弁		2) 僧帽弁		3) 肺動脈弁		4) 三尖弁	
AR	中等度 moderate	MR	軽度 mild	PR	中等度 moderate	TR	軽度 mild
AS	わずかにあり	MS	なし none	PS	none	RV-RA PG	20.9 mmHg
LV-Ao PG	15.8 mmHg	MVA(Trace)	cm <sup>2</sup>	EDPG	9.8 mmHg	Vmax	2.3 m/s
Vmax	2 m/s	MVA(PHT)	cm <sup>2</sup>				

