



Case: 60 y.o. male

Diagnosis: Dilated phase of HCM

Clinical course: 2000~DCM (LVEF 23%)

2001 ~VT/ ICD (Guidant) implant

2005~acute heart failure

2007~acute heart failure

2008~grade up for CRTD planned

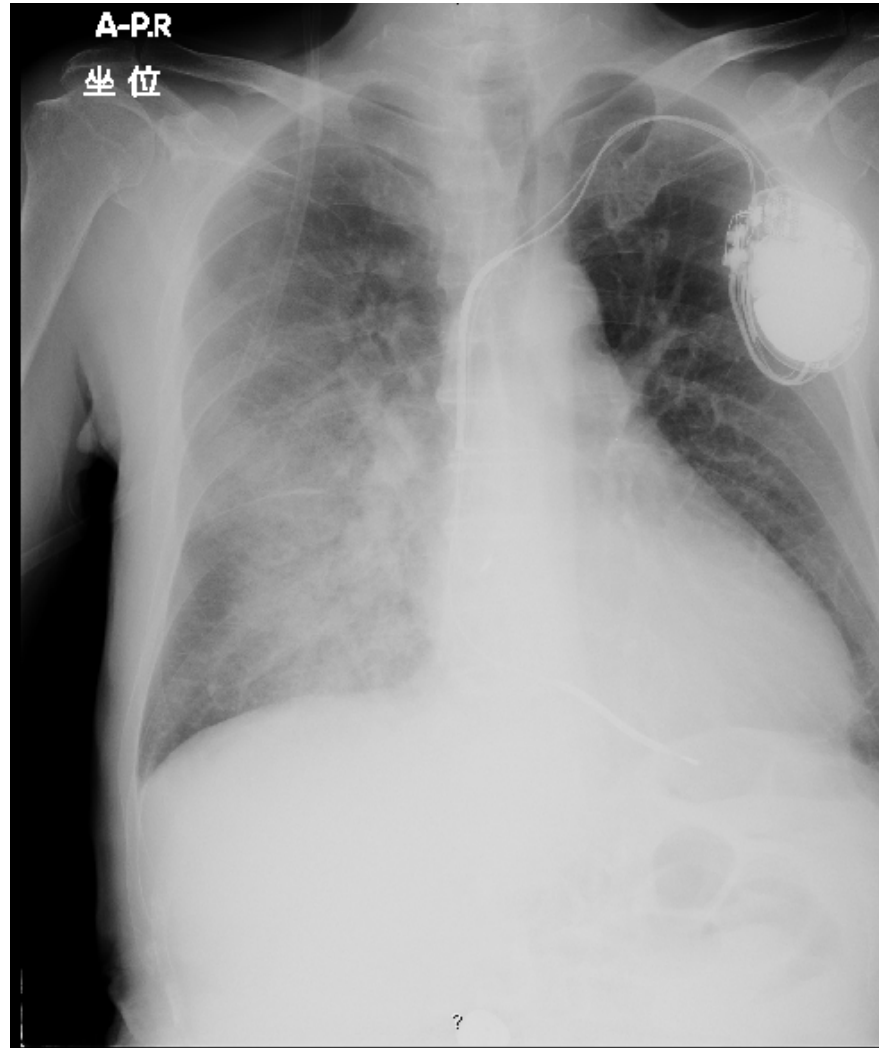


CCT 2008 Live Case Demonstration

Shiga Medical Center for Adults

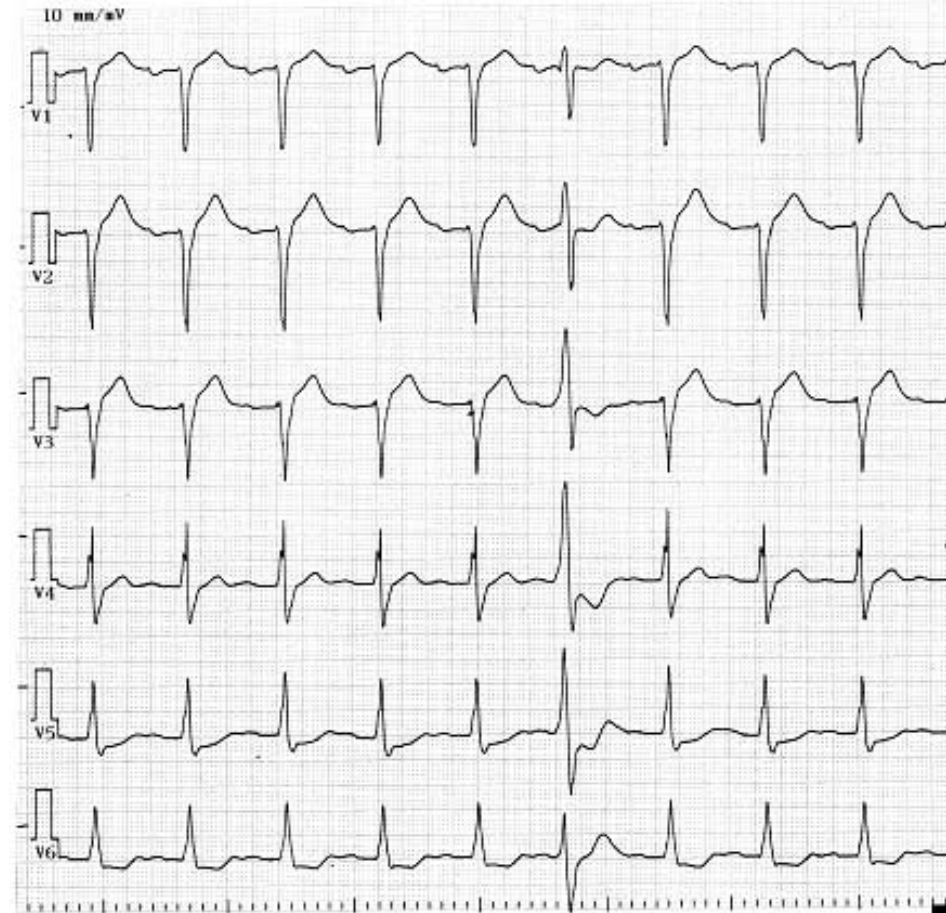
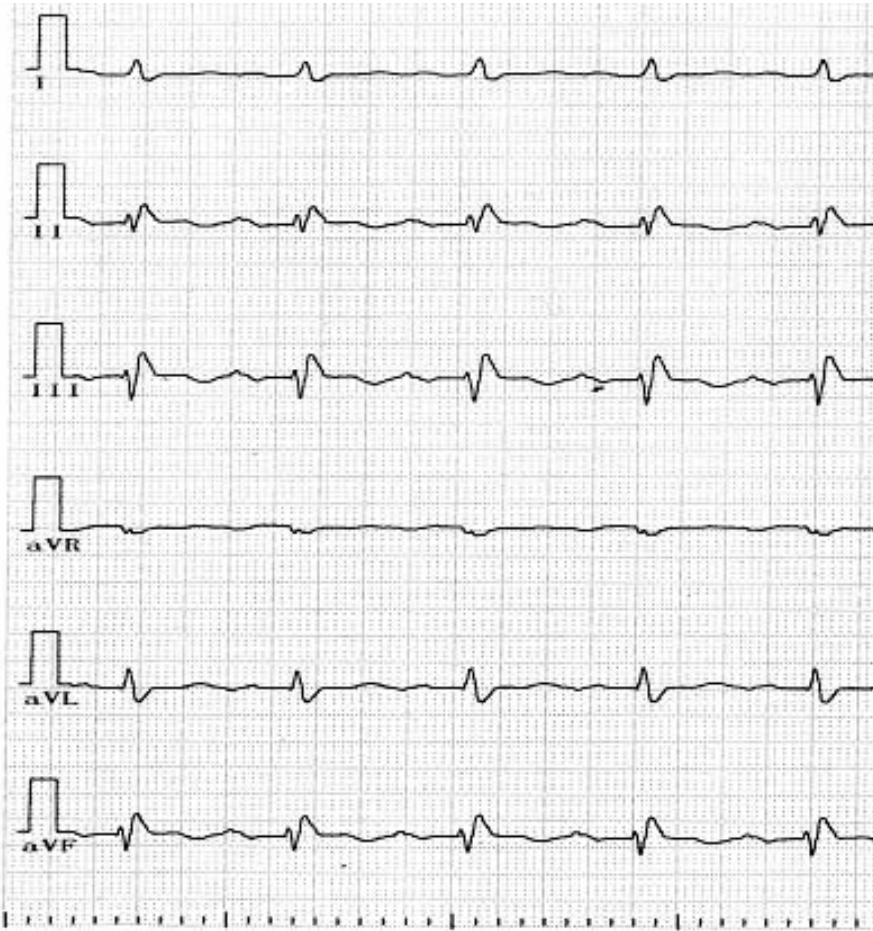
CCT 2008

Chest Xp



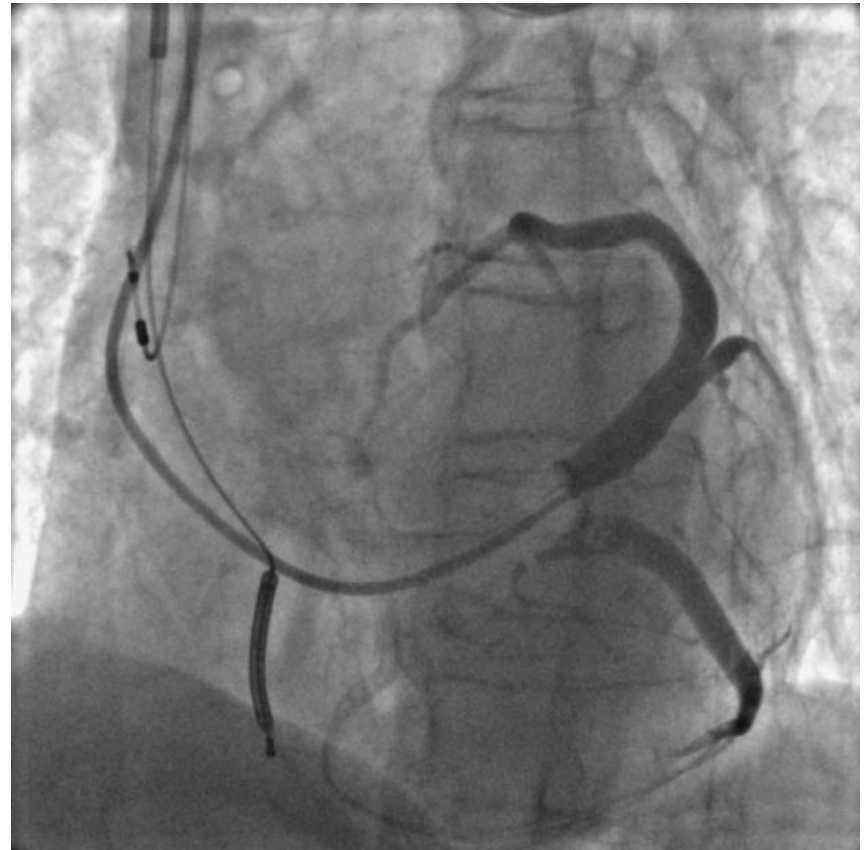
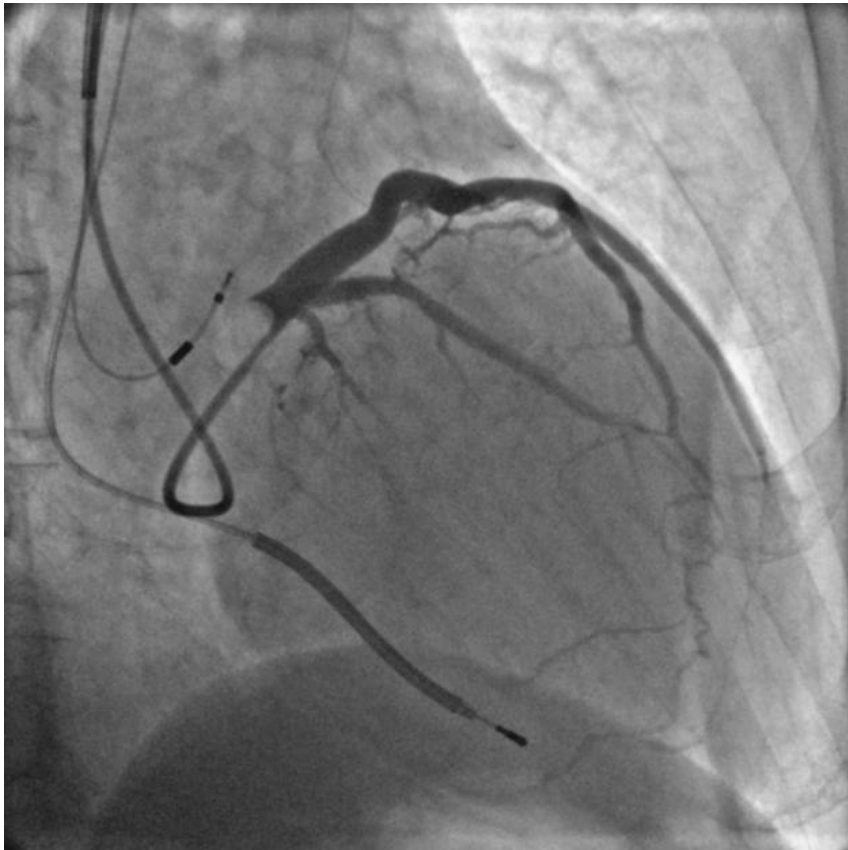


12 lead ECG



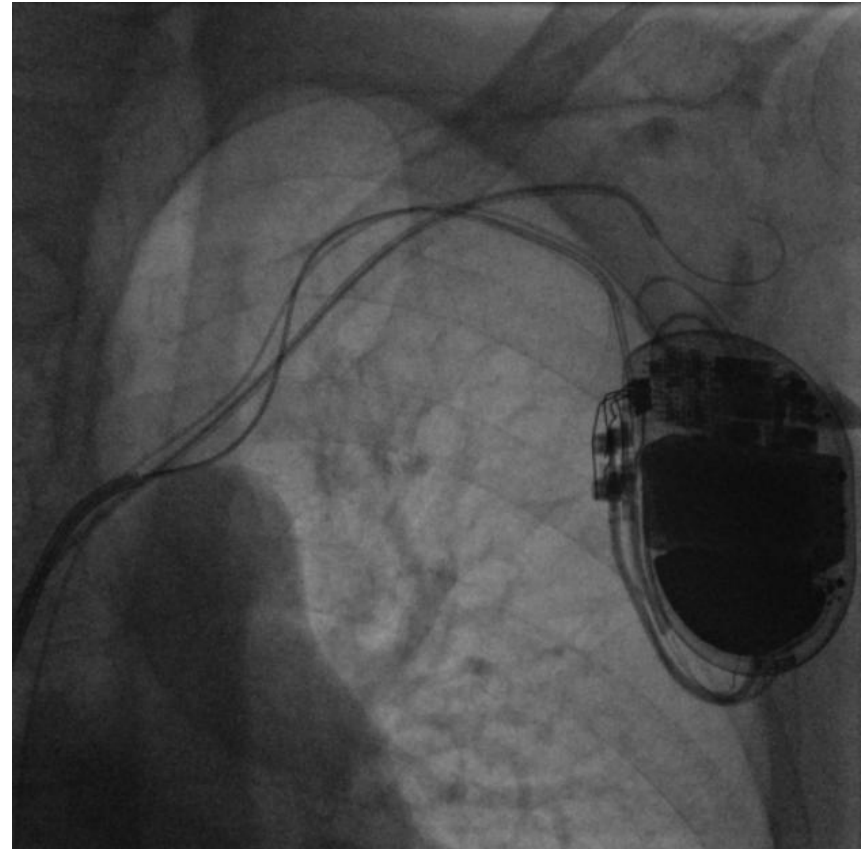
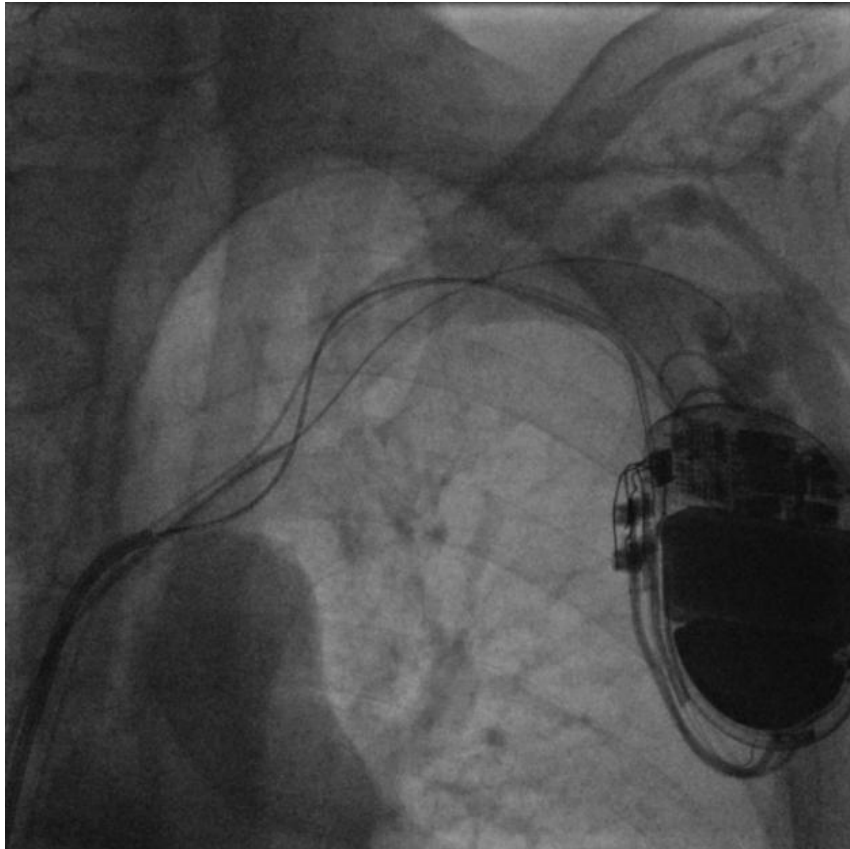


CS angiography





Left subclavian vein patency





LVG

Dd

Ds

