



CCT 2008 Live Case Demonstration

Shiga Medical Center for Adults

CCT 2008

Case: 68 y.o. female

Diagnosis: paroxysmal atrial fibrillation (AF)

Clinical course: 1993~ autoimmune hepatitis

2003~ drug refractory AF

2005: cerebral infarction

2006 Dec : First AF ablation session

AF not inducible

4 PV isolation, RA isthmus ablation

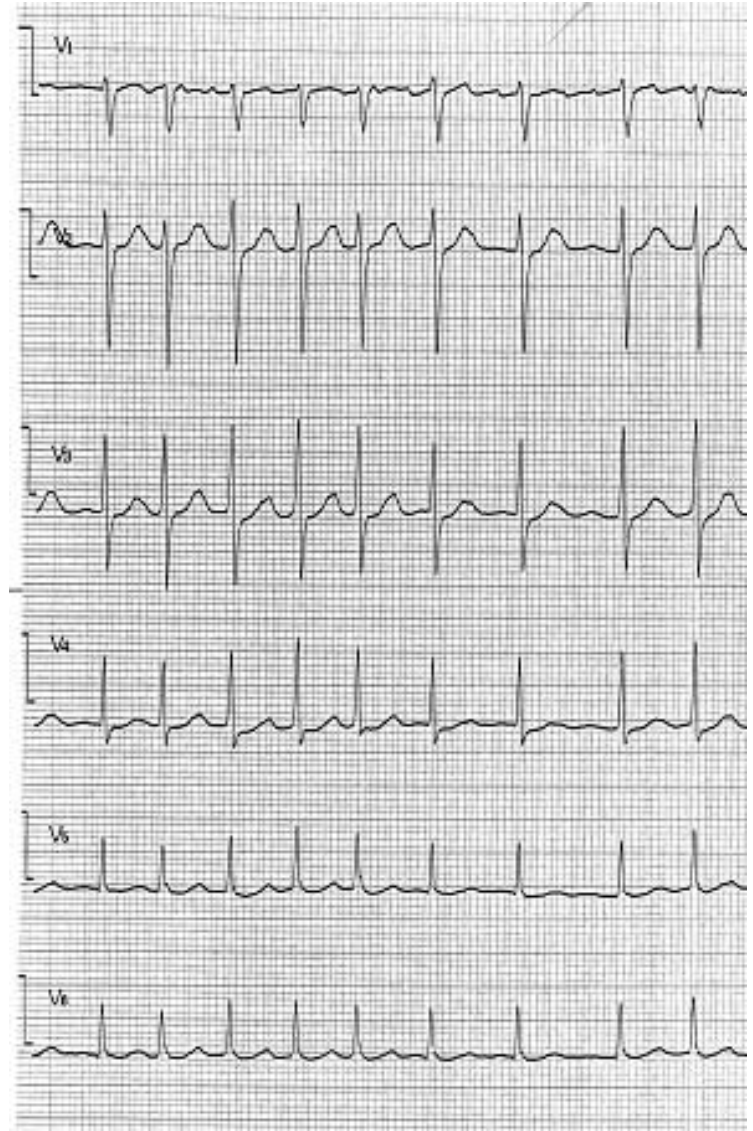
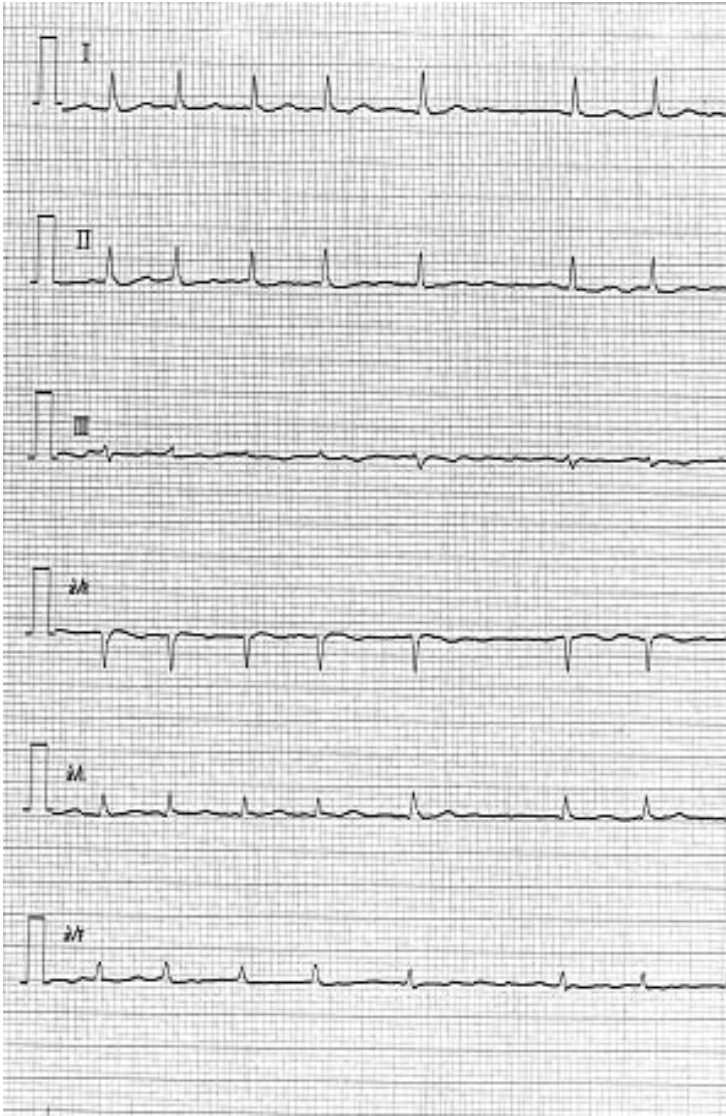
2007 Jul : coronary intervention to LAD#9, 10

2007 Sep: RFCA for frequent APC (HRA and CSos)
with ESI

2008 Jan: recurrent AF symptoms

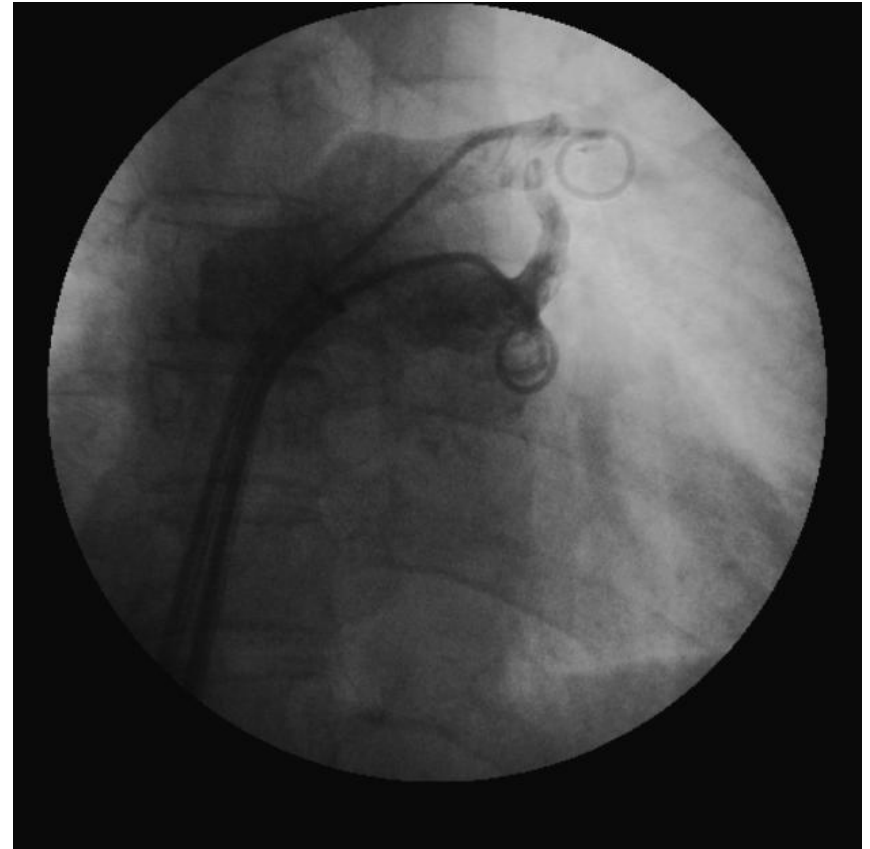
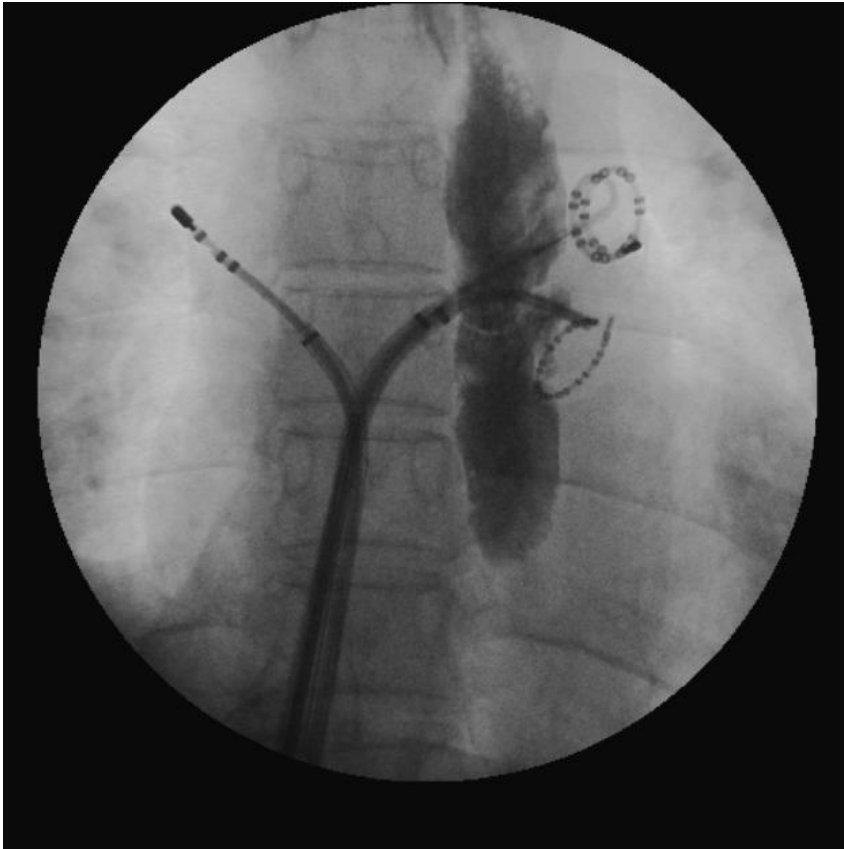


ECG (AF)



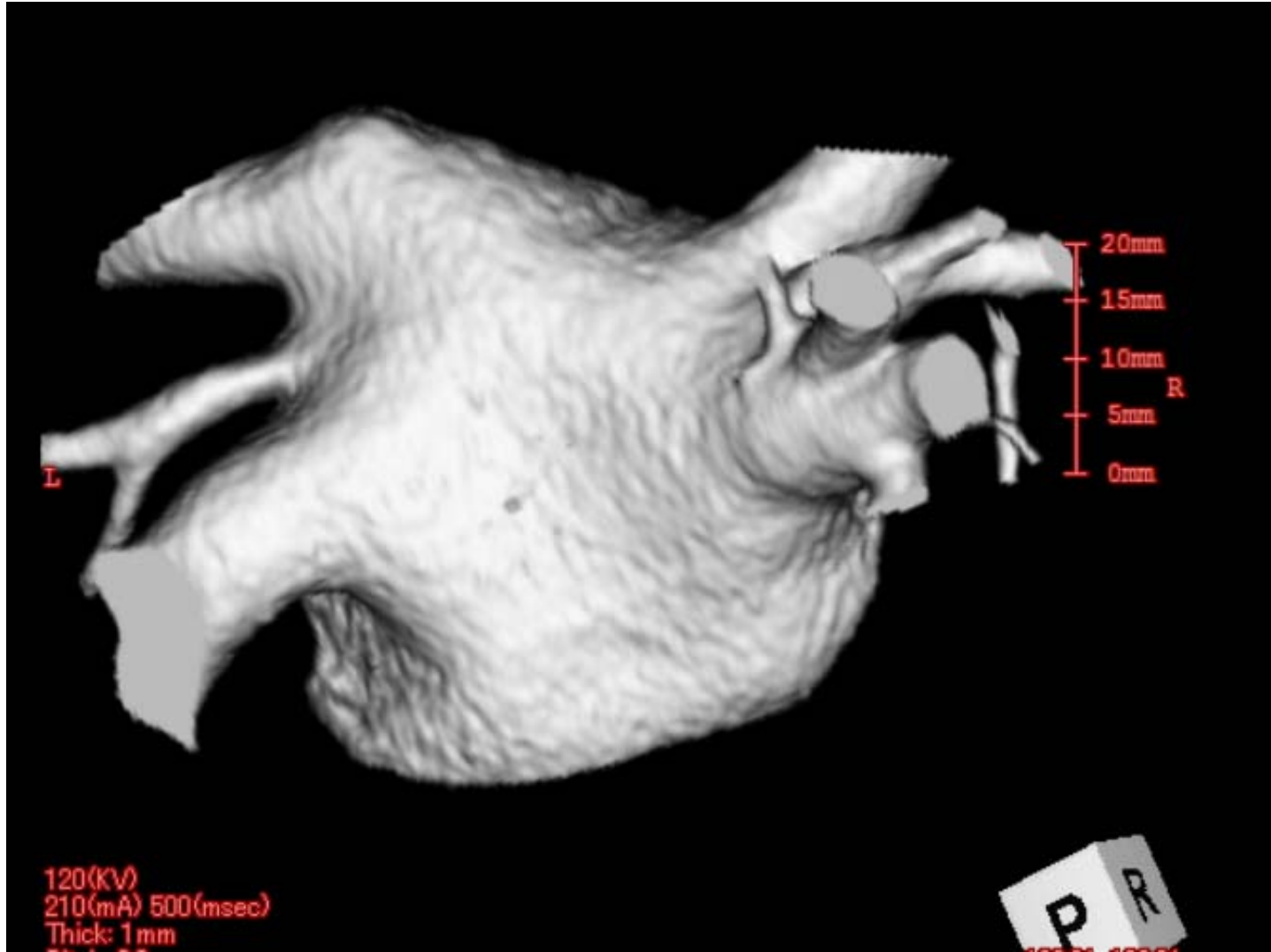


Location of left pulmonary vein ostium and esophagus





3D-CT of left atrium and pulmonary vein





Ablation sites in the first session

