



G-2 :42 yr M

【C.C】 Palpitation

【Past. I】 Hyperlipidemia (since 2002, medication)

Sleep apnea syndrome(since2006, BIPAP)

【H.L】 alcohol; Sake 800ml/day

【Paroxysmal Atrial Fibrillation】

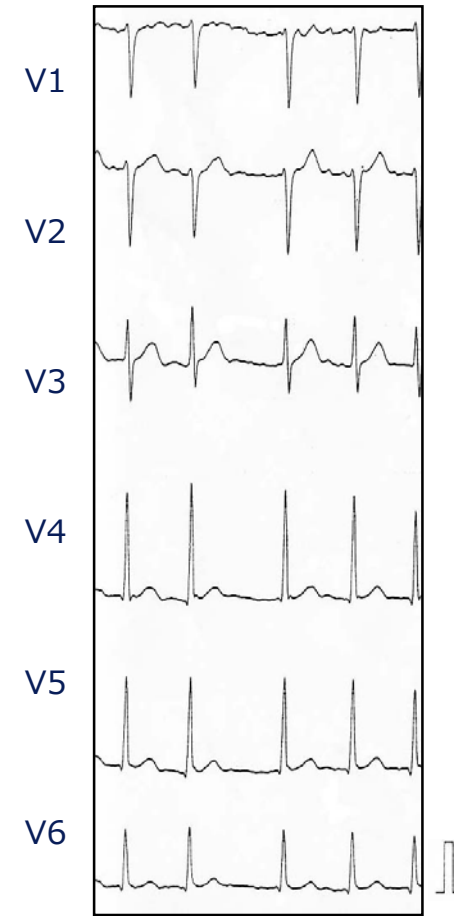
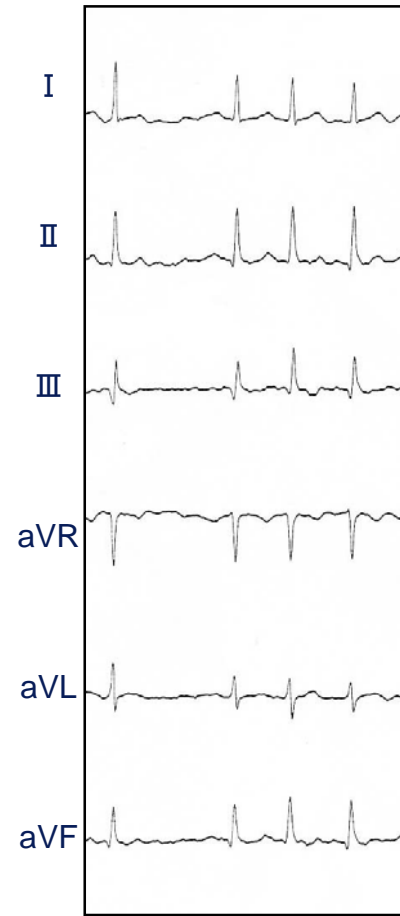
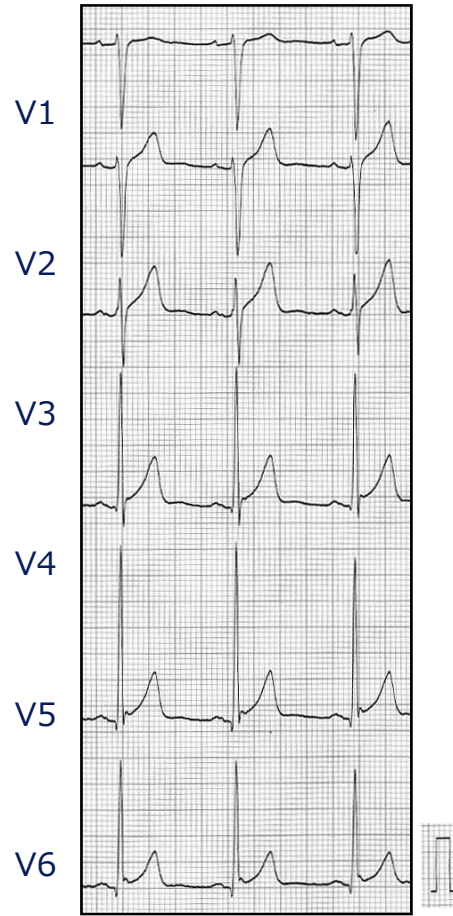
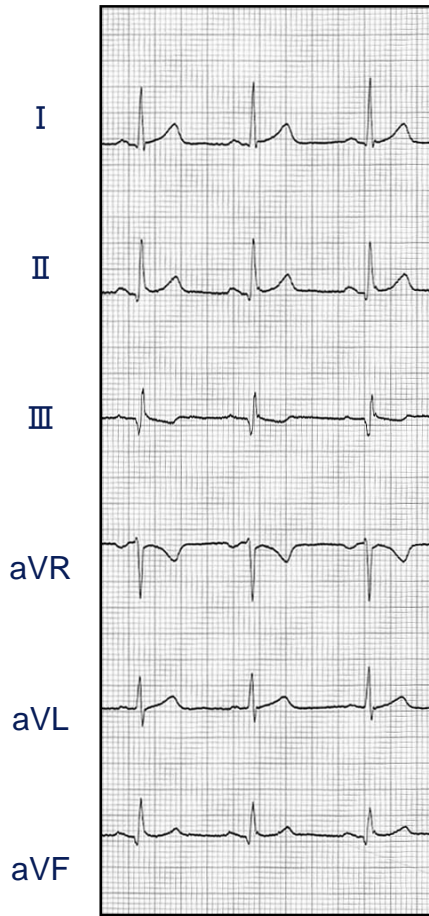
The first Afib attack was in 2005.

Tried drugs were cibenzoline and disopyramide.

【Echocardiography】 LAD: 42mm EF: 66%



12 lead ECG



Sinus Rhythm Jan 10, 2008

Atrial Fibrillation sep 14, 2007